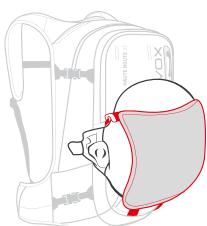


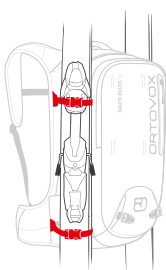


<b>SIZE/ GRÖSSE/ TAILLE/ DIMENSIONE</b>	40l	38l	32l	30l
<b>WEIGHT/ GEWICHT/ POIDS/ PESO</b>	1510g	1480g	1340g	1320g
<b>MIN. WEIGHT/ MIN. GEWICHT/ POIDS MIN./ PESO MIN.</b>	1440g	1410g	1280g	1260g
<b>BACKLENGTH RÜCKENLÄNGE/ DOS/ LUNG. DEL DORSO</b>	Regular	Short (S)	Regular	Short (S)

**HELMET FIXATION/ HELMNETZ**  
FILET CASQUE/ RETE DI FISSAGGIO CASCO



**A-SKIFIX**



**HAUTE ROUTE  
BACKPACK  
VIDEO GUIDE:**



**SCAN QR-CODE TO PLAY:**



[www.ortovox.com/backpack-tutorial](http://www.ortovox.com/backpack-tutorial)

**DE** Zusätzliche Teile findest du im Deckelfach.

**EN** Additional parts are stored in the lid compartment.

**FR** D'autres parties sont conservés dans le compartiment du couvercle. **IT** Componenti aggiuntive sono stivate all'interno del comparto del coperchio.

**OFFICIAL SAFETY PARTNER:**

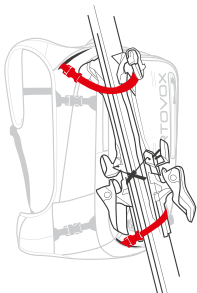
**Schweizer Alpen-Club SAC**  
Club Alpin Suisse  
Club Alpino Svizzero  
Club Alpin Svizzer



TOUR SERIES  
HAUTE ROUTE  
40 / 38 S / 32 / 30 S

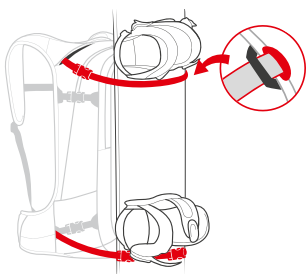


### D-SKIFIX



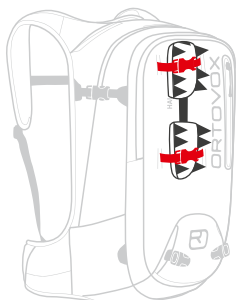
.....

### SNOWBOARD & SNOWSHOE ATTACHMENT/ SNOWBOARD- & SCHNEESCHUHHALTERUNG/ FIXATION DU SNOWBOARD ET DES RAQUETTES/ FISSAGGIO SNOWBOARD E RACCHETTE DA NEVE



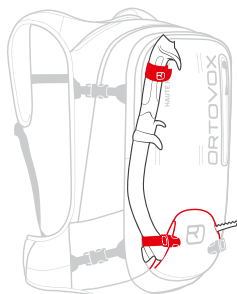
.....

### CRAMPON FASTENING/ STEIGEISENFIXIERUNG/ FIXATION CRAMPONS/ FISSAGGIO RAMPONI



.....

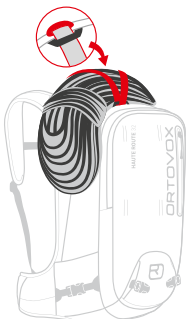
### ICE AXE FASTENING/ PICKELBEFESTIGUNG/ FIXATION PIOLETS/ FISSAGGIO PICCOZZA



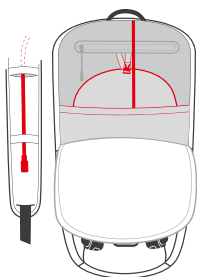
TOUR SERIES  
HAUTE ROUTE  
40 / 38 S / 32 / 30 S



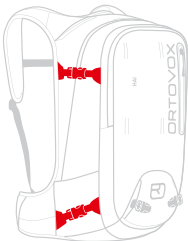
**ROPE ATTACHMENT/ SEILFIXIERUNG/**  
FIXATION DE LA CORDE/ FISSAGGIO CORDA



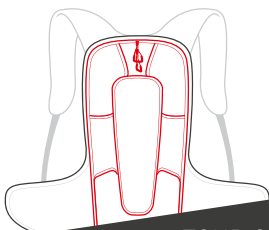
**HYDRATION SYSTEM COMPATIBLE/**  
TRINKSYSTEMVORBEREITUNG/  
COMPATIBLE SYSTÈME D'HYDRATION/  
PREDISPOSIZIONE PER SISTEMA  
D'IDRATAZIONE



**COMPRESSION STRAP/**  
KOMPRESSIONSRIEMEN/  
SANGLES DE COMPRESSION/  
CINGHIE DI COMPRESSIONE



**O-FLEX-FRAME BACK SYSTEM &**  
**BACK ACCESS/**  
O-FLEX-FRAME RÜCKENSYSTEM &  
RÜCKENZUGANG/  
SYSTÈME DORSAL O-FLEX-FRAME &  
ACCÈS AU COMPARTIMENT PRINCIPAL:  
DOS STRUTTURA DORSALE O-FLEX &  
ACCESSO AL COMPARTO PRINCIPALE:  
DORSALE



TOUR SERIES  
HAUTE ROUTE  
40 / 38 S / 32 / 30 S